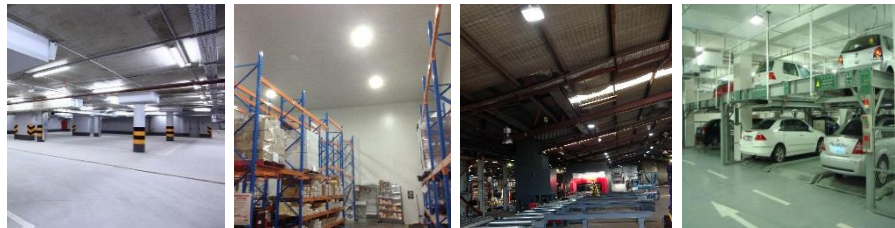




DELTA LED LOW BAY LIGHT



Excellent Heat Dissipation

The specially designed heat sink does not let dust easily collect, while also allowing more air to flow through it, providing for greater heat dissipation and, in turn, improving the performance of a long-lasting, durable luminaire.

IP65

High Durability

A robust, protective design gives this luminaire an IP of 65 and the ability to handle harsh environments.



Big Light, Low Glare

It is different from the common low wattage flood light in the market. The big diffuser covering the array of LEDs provides a better light distribution while effectively reducing the glare and discomfort.



Energy Saving

The combination of high-efficacy LED components with excellent whole system design has SONARAY LED lighting achieving energy savings of 40% - 60% compared with traditional lighting sources.



Quality Core Component

Excellent luminaire design to the core: starting with the LED packages themselves. These luminaires only use high quality SMD packages chipsets that have great quality and long life as backed by LM-80 and TM-21 reports. Quality inside the luminaires that shines on the outside.



Easy Mounting

This luminaire is good for general lighting installations, and is easily mounted on walls. It is also useful as supplementary lighting, such as over work surfaces (in a warehouse, factory, or wherever you like).



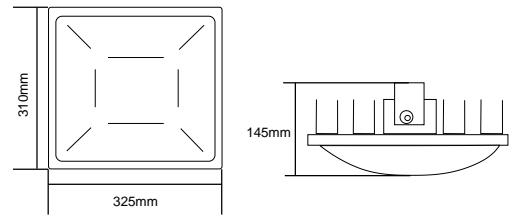
SONARAY®

DELTA LED LOW BAY LIGHT

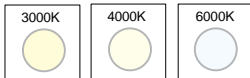


Specification

Material: Aluminum
 Appearance Color: White
 Driver: Built-in
 Input Voltage: 100-277V ~ 50Hz
 Power Factor: ≥ 0.9
 Operating Temperature: $-25^{\circ}\text{C} \sim +45^{\circ}\text{C}$, $-13^{\circ}\text{F} \sim +113^{\circ}\text{F}$
 Lifetime: $\geq 50,000$ hrs



Color Temperature

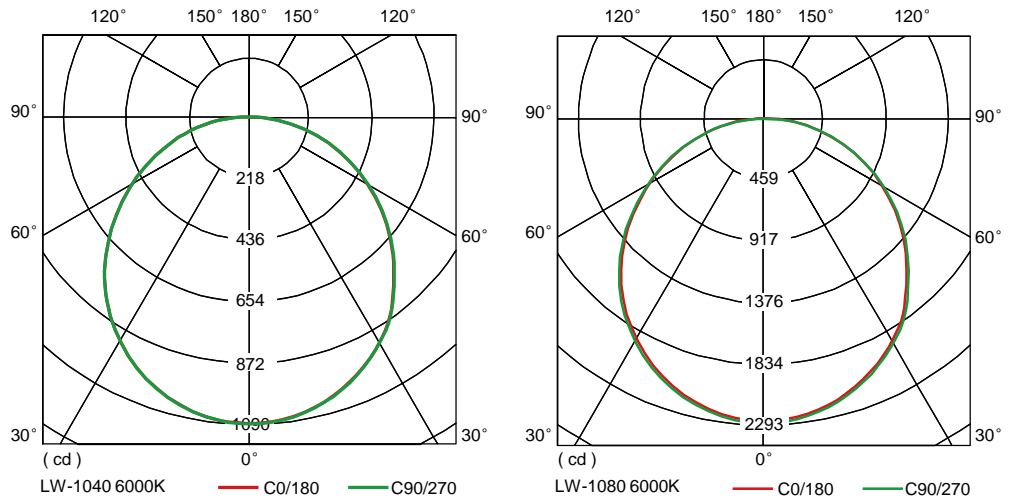


Beam Angle



Model No.	Power (W)	Luminous Flux (lm)	Luminous Efficacy (lm/W)	Color Temperature (K)	CRI (Ra)	Beam Angle (°)	Weight (kg/lb)
LW-1040	40	3600	90	6000	80	120	3.2/7.05
LW-1060	60	5400	90	6000	80	120	3.2/7.05
LW-1080	80	7440	93	6000	80	120	3.5/7.42

Light Distribution Curve



Illuminance Distribution

H(m)	E(lx)	D(cm)
1	1089	310
2	272	620
3	121	940
4	68	1250
5	44	1560
6	30	1870
7	22	2190
8	17	2500
9	13	2810
10	11	3120

H(m)	E(lx)	D(cm)
1	2290	320
2	573	640
3	255	950
4	143	1270
5	92	1590
6	64	1910
7	47	2230
8	36	2540
9	28	2860
10	23	3180

www.sonarayled.com

© 2015 DASCOM (HOLDINGS), LTD. All rights reserved.
 All company and product names are trademarks or registered trademarks of their respective owner. Specifications are subject to change without notice.

Version 1.3. Edited 2015.06

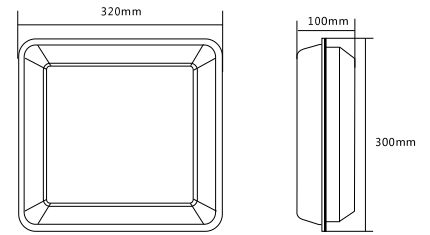


DELTA LED LOW BAY LIGHT



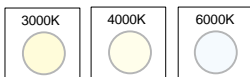
Specification

Material: Aluminum
 Driver: Built-in
 Input Voltage: 100-277V ~ 50/60Hz
 Power Factor: ≥ 0.9
 Battery Charging: 12h
 Battery Specification: Ni-MH12V 1200mAh
 Discharge Time: 180 Minutes
 Radar Induction Range: 10m Max
 Operating Temperature: -10°C ~ $+55^{\circ}\text{C}$, 14°F ~ $+131^{\circ}\text{F}$
 Lifetime: $\geq 40,000$ hrs



CE IP65 IK07

Color Temperature



Beam Angle



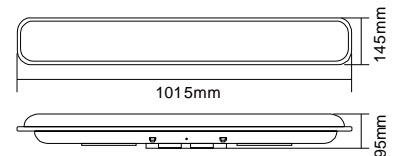
Motion Sensor
 Innovative motion sensor control trigger the light to turn to full power when motion is ever detected, and operates at 70% consumption in other non-operated intervals. (Optional function)

Model No.	Power (W)	Luminous Flux (lm)	Luminous Efficacy (lm/W)	Color Temperature (K)	CRI (Ra)	Beam Angle ($^{\circ}$)	Weight (kg/lb)
LW-1020	20	1800	90	6000	80	120	3.1/6.83



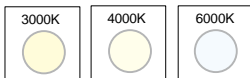
Specification

Material: Aluminum
 Appearance Color: White
 Driver: Built-in
 Input Voltage: 100-220V ~ 50Hz
 Power Factor: ≥ 0.9
 Operating Temperature: -25°C ~ $+45^{\circ}\text{C}$, -13°F ~ $+113^{\circ}\text{F}$
 Lifetime: $\geq 50,000$ hrs



CE IP65

Color Temperature



Beam Angle



Model No.	Power (W)	Luminous Flux (lm)	Luminous Efficacy (lm/W)	Color Temperature (K)	CRI (Ra)	Beam Angle ($^{\circ}$)	Weight (kg/lb)
LWL-1040	40	3600	90	6000	80	120	3.3/7.28
LWL-1060	60	5400	90	6000	80	120	3.3/7.28
LWL-1080	80	7200	90	6000	80	120	3.3/7.28

www.sonarayled.com

© 2015 DASCOM (HOLDINGS), LTD. All rights reserved.
 All company and product names are trademarks or registered trademarks of their respective owner. Specifications are subject to change without notice.

Version 1.3. Edited 2015.06

